

\*TM11-6625-246-20P

**DEPARTMENT OF THE ARMY TECHNICAL MANUAL**

---

**ORGANIZATIONAL MAINTENANCE REPAIR PARTS**

**AND SPECIAL TOOLS LISTS**

**TEST SET, RADIO AN/URM-94**

**FSN 6625-543-1364**

---

**Headquarters, Department of the Army, Washington, D.C.**

**31 July 1973**

Current as of January 1973

Section		Paragraph	Page
I.	INTRODUCTION		
	Scope	1-1	2
	General	1-2	2
	Explanation of columns	1-3	2
	Special information	1 - 4	4
	Location of repair parts	1 - 5	4
	Abbreviations (Not applicable)	1 - 6	4
	Reporting of equipment publication improvements	1 - 7	4
II.	PRESCRIBED LOAD ALLOWANCE (Not applicable)		
III.	R E P A I R P A R T S L I S T		6
IV.	SPECIAL TOOLS, TEST AND SUPPORT EQUIPMENT (Not applicable)		
V.	INDEX- FEDERAL STOCK NUMBER AND REFERENCE NUMBER CROSS-REFERENCE TO FIGURE AND ITEM NUMBER		7

\*This manual supersedes TM11-6625-246-20P, 17 August 1961.

## SECTION I

### INTRODUCTION

#### 1-1. Scope

This manual lists repair parts and special tools required for the performance of organizational maintenance of the **AN/URM-94**. The PCCN for the **AN/URM-94** is **GCMABL** for all models.

#### 1-2. General

This repair parts and special tools list is divided into the following sections:

**a. Prescribed Load Allowance (PLA)** - Section II. Not applicable.

**b. Repair Parts List - Section III.** A list of repair parts authorized for the performance of maintenance at the organizational level. This repair parts list is arranged in alphabetical order.

**c. Special Tool, Test and Support Equipment-** Section IV. Not applicable.

**d. Index-Federal Stock Number and Reference Number Cross-Reference to Figure and Item Number - Section V.** A list, in ascending numerical sequence, of all Federal stock numbers appearing in the listings, followed by a list, in alphameric sequence, of all reference numbers appearing in the listings. **Federal** stock number and reference numbers are cross-referenced to **each** illustration figure and item number of reference designation appearance.

#### 1-3. Explanation of Columns

The following provides an explanation of columns in the tabular lists—

**a. Source, Maintenance, and Recoverability Codes (SMR).**

(1) **Source code.** Indicates the manner of acquiring support items for maintenance, repair, or overhaul of end items. Source codes are—

<i>Code</i>	<i>Explanation</i>
<b>PA</b> —	Item procured and stocked for anticipated or known usage.
<b>PB</b> —	Item procured and stocked for insurance purposes because essentially dictates that a minimum quantity be available in the supply systems.
<b>PC</b> —	Item procured and stocked and which otherwise would be coded PA except that it is deteriorative in nature.
<b>PD</b> —	Support item, excluding support equipment, procured for initial issue or outfitting and stocked only for subsequent or additional

<i>Code</i>	<i>Explanation</i>
	initial issues or outfittings. Not subject to automatic replenishment.
<b>PE-Support</b>	equipment procured and stocked for initial issue or outfitting to specified maintenance repair activities.
<b>PF-Support</b>	equipment which will not be stocked <b>but which</b> will be centrally procured on <b>demand</b> .
<b>PC</b> —	Item procured and stocked to provide for sustained support for the life of the equipment. It is applied to an item peculiar to the equipment which because of probable discontinuance or shutdown of <b>production facilities</b> would prove <b>uneconomical to reproduce at a later time</b> .
<b>KD</b> —	An item of depot <b>overhaul/repair kit and not purchased separately</b> . Depot kit defined as a kit that provides items required at the time of overhaul or repair.
<b>KF</b> —	An item of a maintenance kit and not purchased separately. Maintenance kit defined as a kit that provides an item that can be replaced at organizational or direct support or general support levels of maintenance.
<b>KB</b> —	Item included in both a depot overhaul/repair kit and a maintenance kit.
<b>MO</b> —	Item to be manufactured or fabricated at organizational level.
<b>MF</b> —	Item to be manufactured or fabricated at direct support maintenance level.
<b>MH</b> —	Item to be manufactured or fabricated at general support maintenance level.
<b>MD</b> —	Item to be manufactured or fabricated at depot maintenance level.
<b>AO</b> —	Item to be assembled at organizational level.
<b>AF</b> —	Item to be assembled at direct support maintenance level.
<b>AH</b> —	Item to be assembled at general support maintenance level.
<b>AD</b> —	Item to be assembled at depot maintenance level.
<b>XA</b> —	Item is not procured or stocked because the requirements for the item will result in the replacement of the next higher assembly.
<b>XB</b> —	Item is not procured or stocked. If not available through salvage, requisition.
<b>XC</b> —	Installation drawing, diagram instruction sheet, field service drawing, that is identified by manufacturers' part number.

<b>Code</b>	<b>Explanation</b>
<b>XD</b>	Support items can be requisitioned with justification.

**NOTE**

Cannibalization or salvage may be used as a source of supply for any items source coded above except those coded XA and aircraft support items as restricted by AR 700-42.

(2) Maintenance code. Maintenance codes are assigned to indicate the levels of maintenance authorized to USE and REPAIR support items. The maintenance codes are entered in the third and fourth positions of the Uniform SMR Code Format as follows-

(u) Use (third position). The maintenance code entered in the third position indicates the lowest maintenance level authorized to remove, replace, and use the support item. The maintenance code entered in the third position indicates one of the following levels of maintenance.

<b>Code</b>	<b>Application/Explanation</b>
O	Support item is removed, replaced, used at the organizational level of maintenance.

**NOTE**

A code "C" may be used in this position to denote crew or operator maintenance performed within organizational maintenance.

- F—Support item is removed, replaced, used at the direct support maintenance level.
- H—Support item is removed, replaced, used at the general support maintenance.
- D—Support items that are removed, replaced, used at depot only.

(b) **Repair** (fourth position). The maintenance code entered in the fourth position indicates whether the item is to be repaired and identifies the lowest maintenance level with the capability to perform complete repair (i.e., all authorized maintenance functions). When a maintenance code is not used a d&h (-) sign is entered. For multi-service equipment/systems or when a code is entered, this position will contain one of the following maintenance codes as assigned by the service(s) that require the code-

<b>Code</b>	<b>Application/Explanation</b>
<b>O</b>	The lowest maintenance level capable of complete repair of the support item is the organizational level.
<b>F</b>	The lowest maintenance level capable of complete repair of the support item is direct support.
<b>H</b>	The lowest maintenance level capable of com-

<b>Code</b>	<b>Application/Explanation</b>
	plete repair of the support item is general support.
D	The lowest maintenance level capable of complete repair of the support item is the depot level.
L	Repair restricted to designated Specialized Repair Activity.
Z	Non-repairable. No repair is authorized.
R	No repair is authorized. The item may be reconditioned by adjusting, lubricating, etc., at the user level. No parts or special tools are procured for the maintenance of this item.

(3) Recoverability **code**. Recoverability codes are assigned to support items to indicate the disposition action on unserviceable items. The recoverability code is entered in the fifth position of the uniform SMR Code Format as follows-

<b>Code</b>	<b>Explanation</b>
Z	Non-repairable item. When unserviceable, condemn and dispose at the level indicated in the first digit of the maintenance code.
O-RF	pairable item. when uneconomically repairable, condemn and dispose at organizational level.
F	Repairable item. When uneconomically repairable, condemn and dispose at the direct support level.
H	Repairable item. When uneconomically repairable, condemn and dispose at the general support level.
D	Repairable item. When beyond lower level repair capability, return to depot. Condemnation and disposal not authorized below depot level.
L	Repairable item. Repair, condemnation, and disposal not authorized below depot/Specialized Repair Activity level.
A	Item requires special handling or condemnation procedures because of specific reasons (i.e., precious metal content, high dollar value, critical material or hazardous material).

**b. Federal Stock Number.** Indicates the Federal stock number assigned to the item and will be used for requisitioning purposes.

**c. Description.** Indicates the Federal item name and a minimum description required to identify the item. The last line indicates the reference number followed by the applicable Federal Supply Code for Manufacturer (FSCM) in parentheses. The FSCM is used as an element in item identification to designate manufacturer or distributor or Government agency, etc., and is identified in SB 708-42.

**d. Unit of Measure (U/M).** Indicates the standard or basic quantity by which the listed item is used

in performing the actual maintenance function. This measure is expressed by a two-character alphabetical abbreviation; e.g., ea, in, pr, etc., and is the basis used to indicate quantities and allowances in subsequent columns. When the unit of measure differs from the unit of issue, the lowest unit of issue that will satisfy the required units of measure will be requisitioned.

e. Quantity Incorporated *in* Unit. This column indicates the quantity of the item used in the equipment.

f. **15-Day Organizational Maintenance Allowance.**

(1) The repair parts indicated by an asterisk in the allowance column represent those authorized for use at the organizational category, and will be requisitioned on an "as required" basis, until stockage is based on demand in accordance with AR 710-2.

(2) Major Army commanders are authorized to approve reduction in the range of support items authorized for use in units within their commands. Recommendations for increase in range of items authorized for use will be forwarded to Commander, US Army Electronics Command, ATTN: AMSEL-MA-CW, Fort Monmouth, N.J., 07703. Any changes approved will be reflected in a revision to the RPSTL.

(3) Allowance quantities are indicated in the special tools list section for special tools, TMDE, and other equipment.

g. Illustration. This column is divided as follows:

(1) **Figure number.** Indicates the figure number of the illustration on which the item is shown in TM 11-6625-246-12 and TM 11-6625-246-45.

(2) **Item number.** Indicates the item number or reference designation used to reference the item in the illustration.

**1-4. Special Information**

a. Usable on codes are included in column 3. Uncoded items are applicable to all models. Identification of the usable on codes used in this publication are-

Code	Used on
<b>AFU</b>	<b>AN/URM-94</b>

b. The following publications pertain to the AN/URM-94 and its components:  
**TM 11-6625-246-12 Operator and Organizational Maintenance Manual: Test Set, Radio AN/URM-94.**

TM 11-6625-246-45 GS and Depot Maintenance Manual: Test Set, Radio AN/URM-94.

**1-5. Location of Repair Parts**

a. This manual contains one cross-reference index (sec V) to be used to locate a repair part when either the Federal stock number or reference number (manufacturer's part number) is known. The first column in the index is prepared in numerical or alphanumeric sequence in ascending order. The reference numbers (manufacturer's part numbers) are listed immediately following the last listed Federal stock number in the index of Federal stock numbers.

b. When the Federal stock number or reference number is known, follow the procedures given in (1) and (2) below.

(1) Refer to the index of Federal stock numbers (sec V) and locate the Federal stock number or reference number. The FSN and reference number are cross-referenced to the applicable figure and item number or reference designation.

(2) Refer to the repair parts list (sec III) and locate the figure number (col 7a) and item number or reference designation (col 7b) as noted in the FSN index.

c. When the figure and item number or reference designation are known, scrutinize columns 7a and 7b of the repair parts list (sec I, II) until the item is located.

d. When the FSN, reference number, figure number, item number and reference designation are not known, scrutinize column 3 of the repair parts list (sec III), which is arranged in alphabetical order.

1-6. Abbreviations

Not applicable.

1-7. Reporting of Equipment

**Improvements**

The reporting of errors, omissions, and recommendations for improving this publication by the individual user is encouraged. Reports should be submitted on DA Form 2028 (Recommended Changes to Publications) and forwarded direct to Commander, US Army Electronics Command, ATTN: AMSEL-MA-CW, Fort Monmouth, N.J., 07703.

( Next printed page is 6 )

SECTION III

TM11-6625-246-20P

(1) SMR CODE	(2) FEDERAL STOCK NUMBER	(3) DESCRIPTION REFERENCE NUMBER & MFR CODE      USABLE ON CODE		(4) UNIT OF MEAS	(5) QTY INC IN UNIT	(6) 15-DAY ORGANIZATIONAL MAINTENANCE ALW				(7) ILLUSTRATION	
						(a)	(b)	(c)	(d)	(a)	(b)
						1-5	6-20	21-50	51-100	FIGURE NO.	ITEM NO.
PAQZZ	6625-678-4330	DUP 0001 TEST SET,RADIO AN/URM-94 TENNA AT-807/URM-94 E6 TELESCOPIC 3 SECT TO 50 MC RANGE 152TO 174 MC RANGE PLUG UNTED	EA	1	*	*	*	*		1	E6
PAQZZ	6625-608-1809	040B136 (81223) S, CARRYI, MP21 CANVAS ZIPPER TYPE 13 X 12 4 X 7 IN 52CRD (15814)	EA	1	*	*	*	*		1	MP21
PAQZZ	5340-598-6284	DUP 0002 TEST SET,RADIO TS-970/U MPER, RUBBER H7 5-8 IN OD X 5-16 IN H O-A ACK	EA	4	*	*	*	*			H7
PAQZZ	5340-291-3650	B-2 (70485) MPER, RUBBER H9 BLACK 3-4 IN OD X 9-16 IN 7-A (70485)	EA	4	*	*	*	*			H9
PAQZZ	5920-578-2844	P, ELECTRICAL E18 PLASTIC WITH BRASS..... SERT 1 1-32 IN LG X 1-2 IN DIA 2001SA2 (75915)	EA	1	*	*	*	*			E18
PACZZ	5960-188-3551	ELECTRON TUBE V2..... 6 (99813)	EA	1	*	*	*	*	10		V2
PACZZ	5960-166-7663	ELECTRON TUBE V1..... A07 (99813)	EA	1	*	*	*	*	10		V1
PACZZ	5920-578-2837	SE, CARTRIDGE F1 1-200 AMP, 250 V 1 IN LG 1-4 IN DIA 31-200 (71400)	EA	1	*	*	*	*	10		F1
PAQZZ	5960-272-9094	IELD, ELECTRON TUBE E11..... L02U02 (81350)	EA	1	*	*	*	*	10		E11
PAQZZ	5960-264-3004	IELD, ELECTRON TUBE E10..... L03U02 (81350)	EA	1	*	*	*	*	10		E10

SECTION V

TM11-6625-246-20P

INDEX - FEDERAL STOCK NUMBER AND REFERENCE NUMBER  
CROSS-REFERENCE TO FIGURE AND ITEM NUMBER

STOCK NUMBER	FIGURE NO.	ITEM NO.	STOCK NUMBER	FIGURE NO.	ITEM NO.
5340-291-3650		H9	5960-166-7663	10	V1
5340-598-6284		H7	5960-188-3551	10	V2
			5960-264-3004	10	E10
			5963-272-9094	10	E11
5920-578-2837	10	F1			
5920-578-2844		E18	6625-608-1809	1	MP21
			6625-678-4330	1	E6

REFERENCE NO.	MFR CODE	FIG. NO.	ITEM NO.	REFERENCE NO.	MFR CODE	FIG. NO.	ITEM NO.
					81350	10	E11
			TS102U02		81350	10	E10
			TS103U02		99813	10	V1
			12AU7		70485		H9
			18		75915		E18
			37200LSA2		99813	10	V2
C30408136	81223	1	E6		15814	1	MP21
			6AK6				
			7652CRD		71400	LO	F1
					70485		H7
			8AG1-200				
			868-2				

**By Order of the Secretary of the Army:**

**CREIGHTON W. ABRAMS**  
*General, United States Army*  
*Chief of Staff*

**Official:**

**VERNE L. BOWERS**  
*Major General, United States Army*  
*The Adjutant General*

**Distribution:**

To be distributed in accordance with DA Form 12-50, Section II, Direct and General Support Maintenance requirements for AN/FRC-15, AK/FRC-27, and AN/FRC-28 and DA Form 12-51, Direct and General Support Maintenance requirements for AN/TRC-22, AN/TRC-28, AN/TRC-34, AN/VRC-6 and AN/VRC-19.

**END**

**12-25-82**

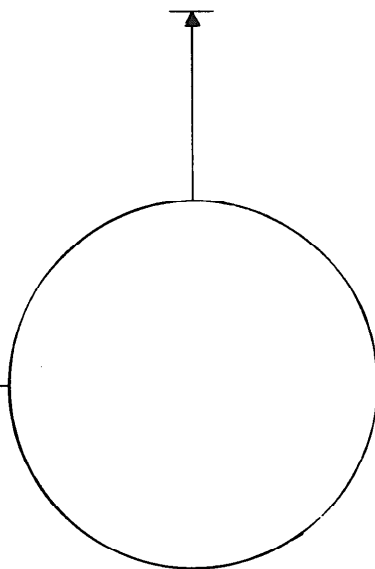
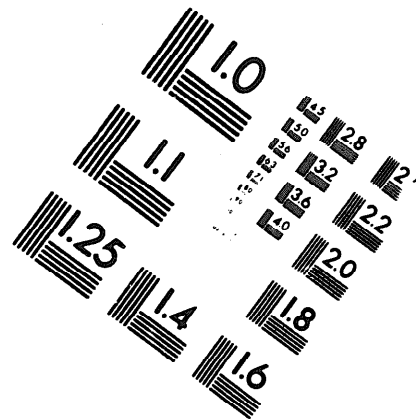
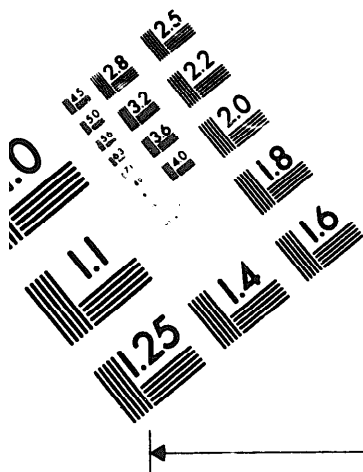
**DATE**







DEPARTMENT OF THE ARMY  
MICROFORM  
TEST TARGET



1.0 mm (e= .81 mm)

ABCDEFGHIJKLMNQRSTUUVWXYZ1234567890  
abcdefghijklmnopqrstuvwxyz\$%&/'%# 1/2 1/4 3/4 —=+ x&@\*

1.5 mm (e= 1.09 mm)

ABCDEFGHIJKLMNQRSTUUVWXYZ1234567890  
abcdefghijklmnopqrstuvwxyz\$%&/'%# 1/2 1/4 3/4 —=+ x&@\*

2.0 mm (e= 1.37 mm)

ABCDEFGHIJKLMNQRSTUUVWXYZ  
abcdefghijklmnopqrstuvwxyz  
1234567890\$%&/'%# 1/2 1/4 3/4 —=+ x&@\*

2.5 mm (e= 1.77 mm)

ABCDEFGHIJKLMNQRSTUUVWXYZ  
abcdefghijklmnopqrstuvwxyz  
1234567890\$%&/'%# 1/2 1/4 3/4 —=+ x&@\*

1.0 mm (e= .81 mm)

ABCDEFGHIJKLMNQRSTUUVWXYZ1234567890  
abcdefghijklmnopqrstuvwxyz\$%&/'%# 1/2 1/4 3/4 —=+ x&@\*

1.5 mm (e= 1.09 mm)

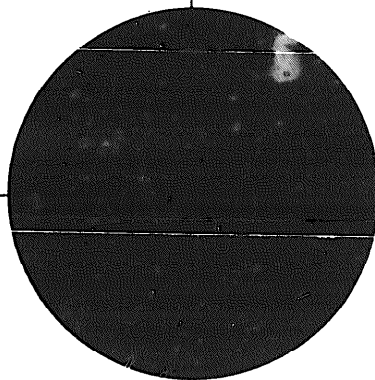
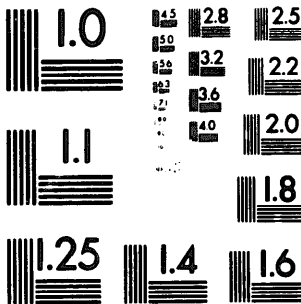
ABCDEFGHIJKLMNQRSTUUVWXYZ1234567890  
abcdefghijklmnopqrstuvwxyz\$%&/'%# 1/2 1/4 3/4 —=+ x&@\*

2.0 mm (e= 1.37 mm)

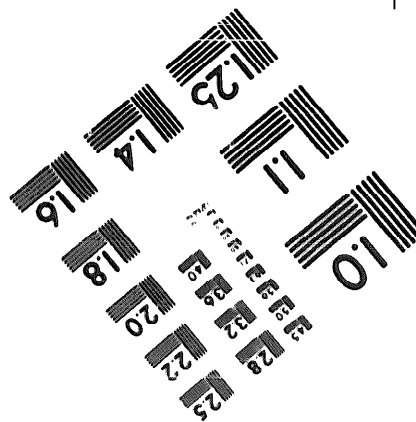
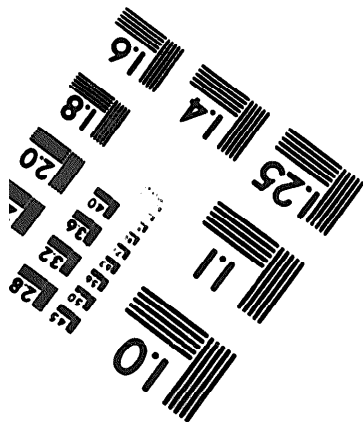
ABCDEFGHIJKLMNQRSTUUVWXYZ  
abcdefghijklmnopqrstuvwxyz  
1234567890\$%&/'%# 1/2 1/4 3/4 —=+ x&@\*

2.5 mm (e= 1.77 mm)

ABCDEFGHIJKLMNQRSTUUVWXYZ  
abcdefghijklmnopqrstuvwxyz  
1234567890\$%&/'%# 1/2 1/4 3/4 —=+ x&@\*



200 MM



250 MM